

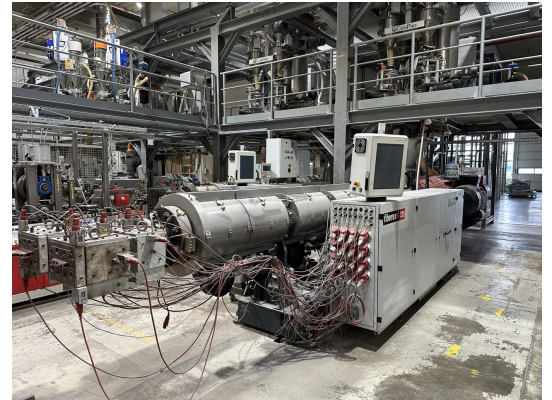
Data Sheet

Code: Es 10011 CI 08

Brand: CINCINNATI

Model: FIBEREX ARGOS 135

Year: 2008



Description:

Complete line for WPC profiles

Twin screw extruder, screw and barrel in tungsten carbide model Cincinnati ARGOS 135 double vented year 2008

Forced feeder

L/D 37

Gravimetric dosing system CONPRO 5 components

Working hours 40.742

Double strand calibration table GREINER get.CAL 20,3 - 6p/8z - Dual A year 2008

Double strand haul-off/saw GREINER Cob. get.COM 30/9-235-S/500 - DS year 2008

Tipping table GREINER GTT 6,00 anno 2008

Available spare screw and barrel

All the mentioned technical data are merely intended to describe the item, they are subject to change without any notice and refer to the standard conditions of a new good. A used good might not have the same figures as the new one.